

Why is rural broadband important to communities and Nebraska's



Rural broadband availability & adoption are associated with:

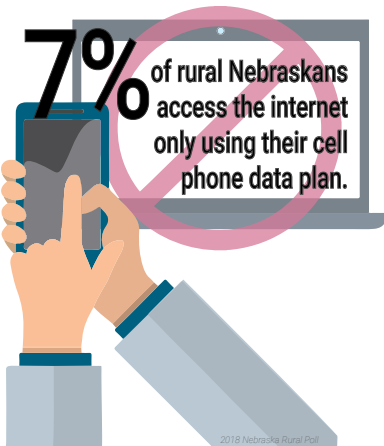
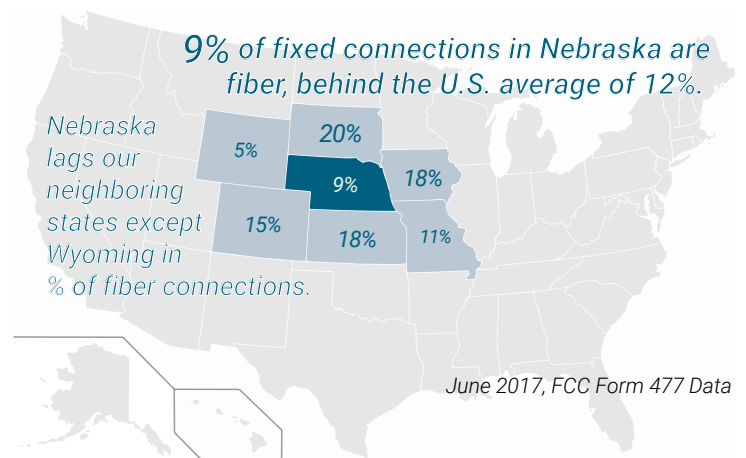
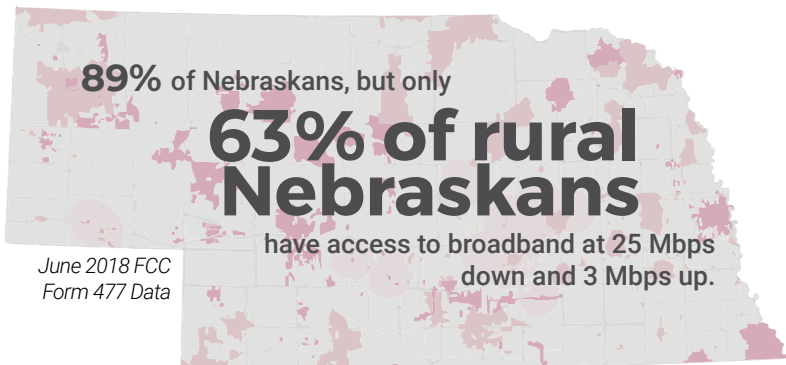
- Attraction and retention of millennials
- Greater economic growth
- Attraction of new firms
- Higher household incomes
- Small business growth

Gallardo, R., Whitacre, B., Grant, A. (January 2018).



Approximately **one in ten** rural Nebraskans report significant limitations from their internet service.

2018 Nebraska Rural Poll



Loading...

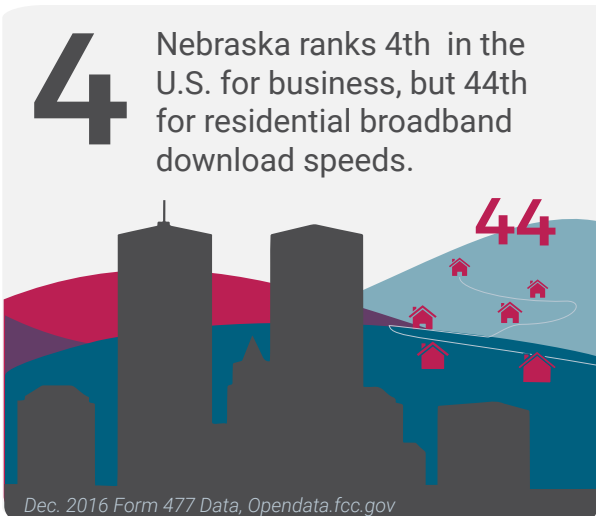
65% of Nebraska libraries only have internet service of 25 Mbps down or less.

2018, Nebraska Library Commission

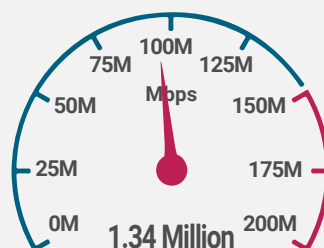
12% of Nebraskans under 18 do not have internet access at home.



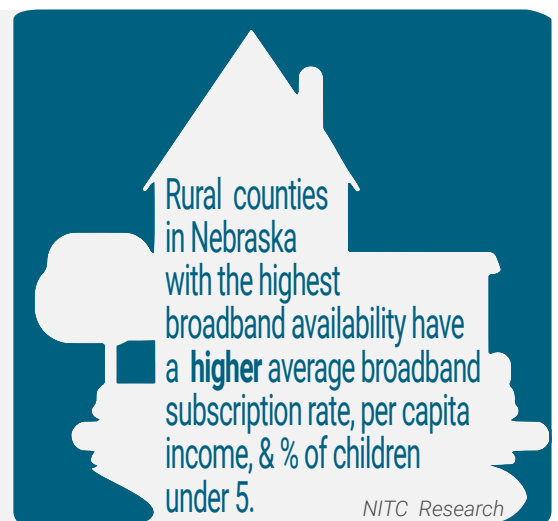
US Census Bureau 2017 American Community Survey five-year estimates.



Over 70% of Nebraskans have broadband of 100 Mbps available.

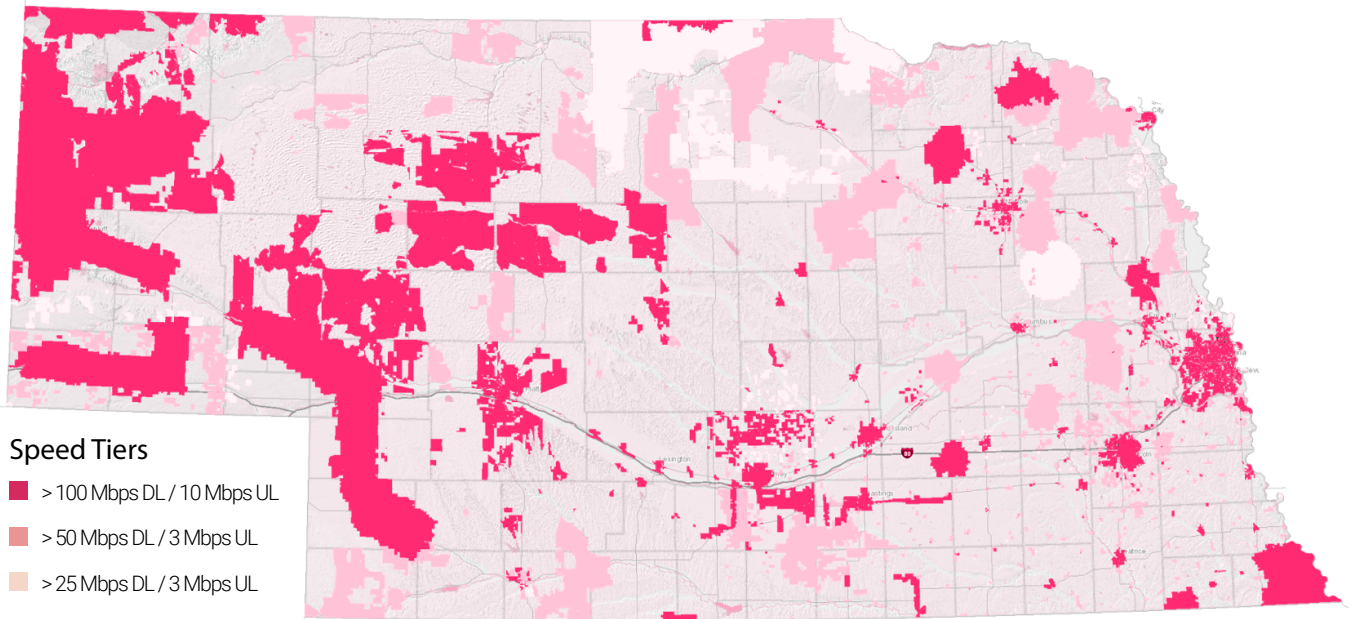


Dec 2016, FCC Broadband Map



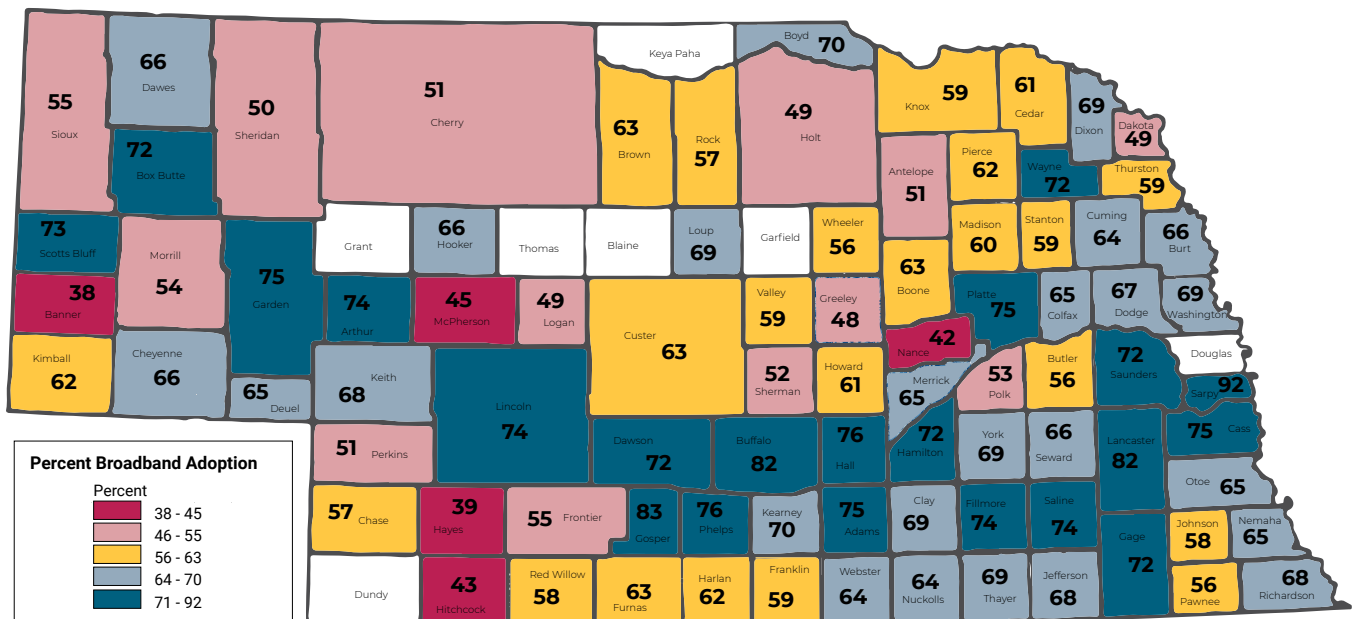
Broadband Availability in Nebraska • 25 Mbps/3

December 2017



broadbandmap.nebraska.gov

Internet Subscription Rates in Nebraska by County • 2016



Data from June 2016 for subscription to internet service at 200 kbps or greater. Nebraska average: 77%

For information about the Rural Broadband Task Force, visit:

ruralbroadband.nebraska.gov

Or contact:

Anne Byers

Nebraska Information Technology Commission

anne.byers@nebraska.gov

402.471.3805



@nitccommunity1

www.facebook.com/NITCcommunity